

# RANZCO Museum

## A glimpse of the forthcoming RANZCO 2016 Melbourne Museum exhibit

The RANZCO Museum will host an exhibit at the College's Annual Scientific Congress in Melbourne. This year the exhibit will feature a number of unusual collections.

Here is a glimpse of what you can expect to see:

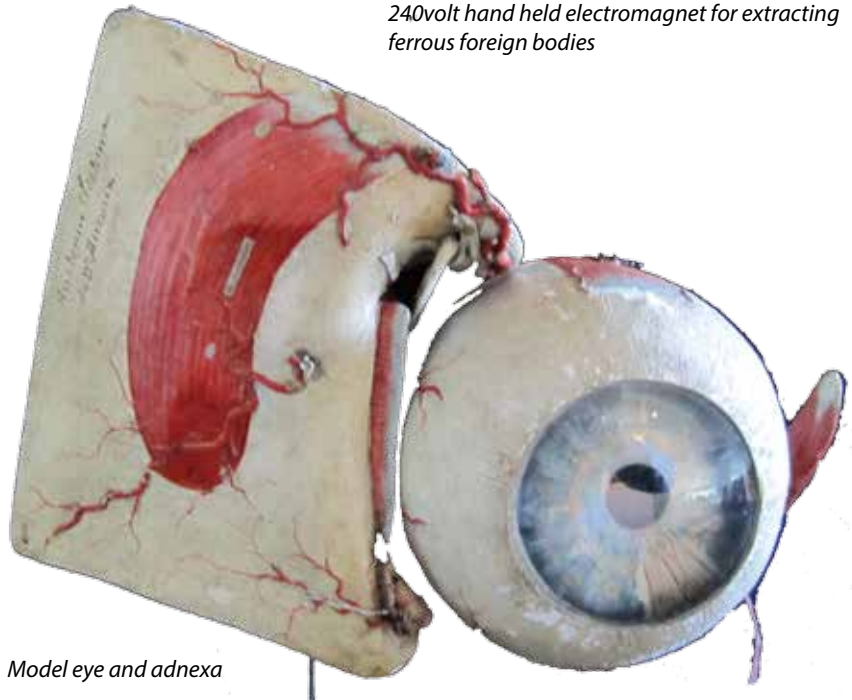
- The development of perimetry from the smallest handheld model to the two metre arc perimeter.
- Collections of the history of magnets and devices for removal of intraocular foreign bodies.
- Colour vision testing and the remarkable story of Dalton who defined defects and the testing instrumentation that followed.
- The teaching of ophthalmology using artificial retinas, 19th century stereoscopic viewers and models of ocular pathology.
- The work of Dame Ida Mann and her Gullstrand slit lamp donated by past President Andrew Stewart.
- Dr Kevin O'Day researched the eyes of Australian fauna in the 1940s. His unique histology collection has been collated by the Anatomy Department at Monash University revealing many specimens described for the first time. The magnificent cabinet and examples of his work will be on display at the exhibit.
- Lunchtime talks in the adjacent Seniors' Lounge include the first illustrated ophthalmology text, ophthalmic curiosities and 'Diseases of Books'.

I look forward to seeing you at the exhibit.

**Dr David Kaufman**  
Curator, RANZCO Museum



240volt hand held electromagnet for extracting ferrous foreign bodies



Model eye and adnexa

## Gullstrand Slit Lamp

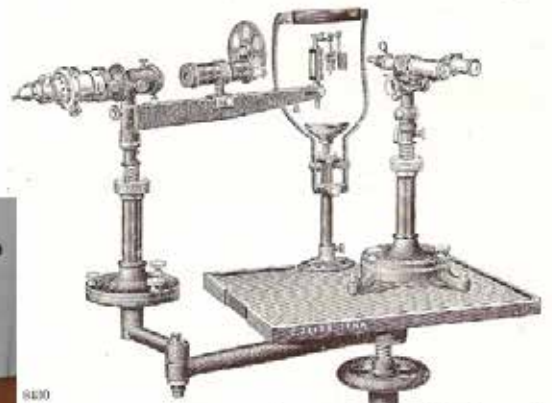


Fig. 2. Complete set of apparatus for eye hospitals: Slit Nitra lamp with Koepple diaphragm tube, polariser, revolving coloured glass wheel and non-spherical aplanatic Vogt slit lamp lens with adjustable Koepple silvered mirror, and Koepple eye microscope with single objective, analyser and binocular attachment for ultra-microscopic and micro-polariscope observations. Above this: A Vogt slit arc lamp (interchangeable with the Nitra lamp) with cooling cell, Koepple diaphragm tube with polariser, and double revolving wheel with smoked glasses and coloured glasses, with non-spherical aplanatic Vogt slit lamp lens and adjustable Koepple silvered mirror (about  $\frac{1}{2}$  act. size).

Dame Ida Mann's Gullstrand slit lamp