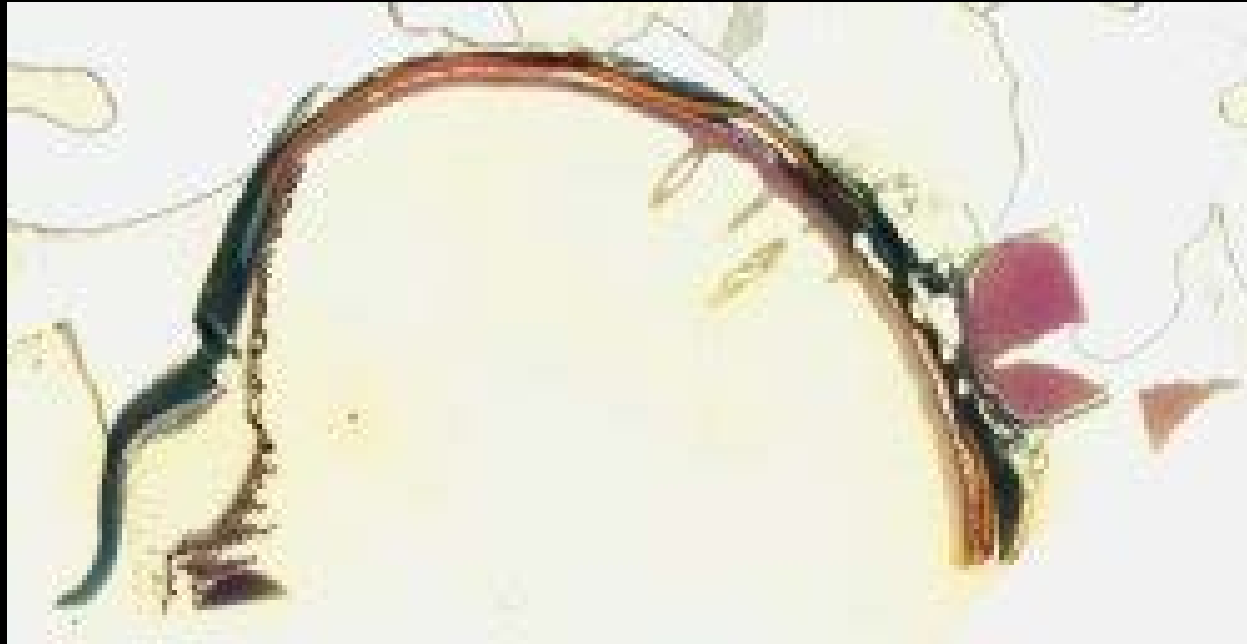


Kevin O'Day
Animal Histology Collection

Digitised slides courtesy of the Histology Department,
Monash University

Albatross (Diomededeidae sp) - Fovea - Slide



Albatross (Diomededeidae sp) - Slide 163



American leaf-toed gecko
(*Phyllodactylus martini*) - Slide 678



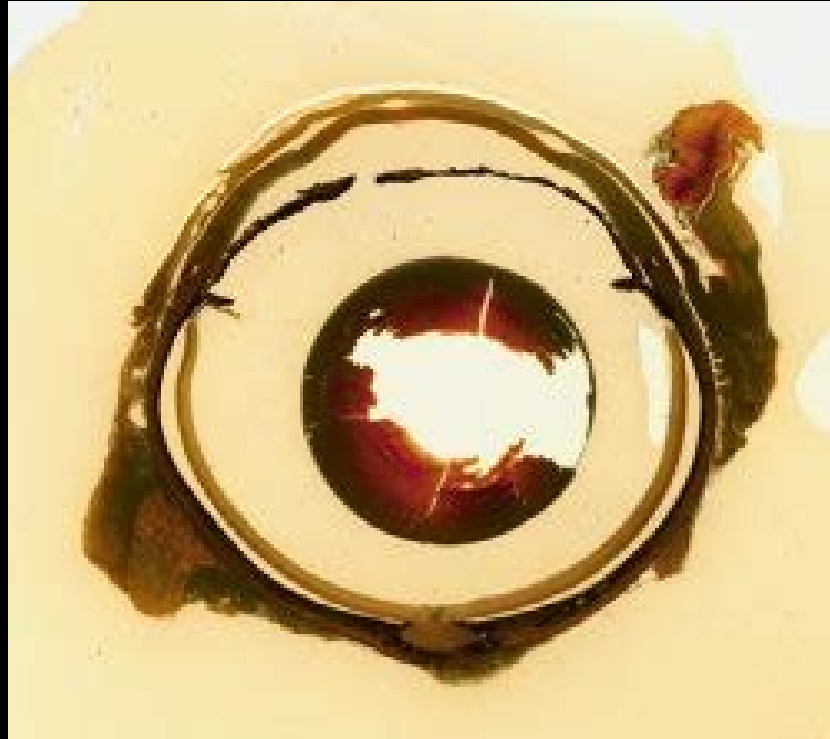
Australian python
(*Morelia spilota variegata*) - Slide 98



Australian python
(*Morelia spilota variegata*) - Slide 100



Australian python
(*Morelia spilota variegata*) - Slide 104



Australian water dragon
(*Intellagama lesueurii* sp) - Slide 168



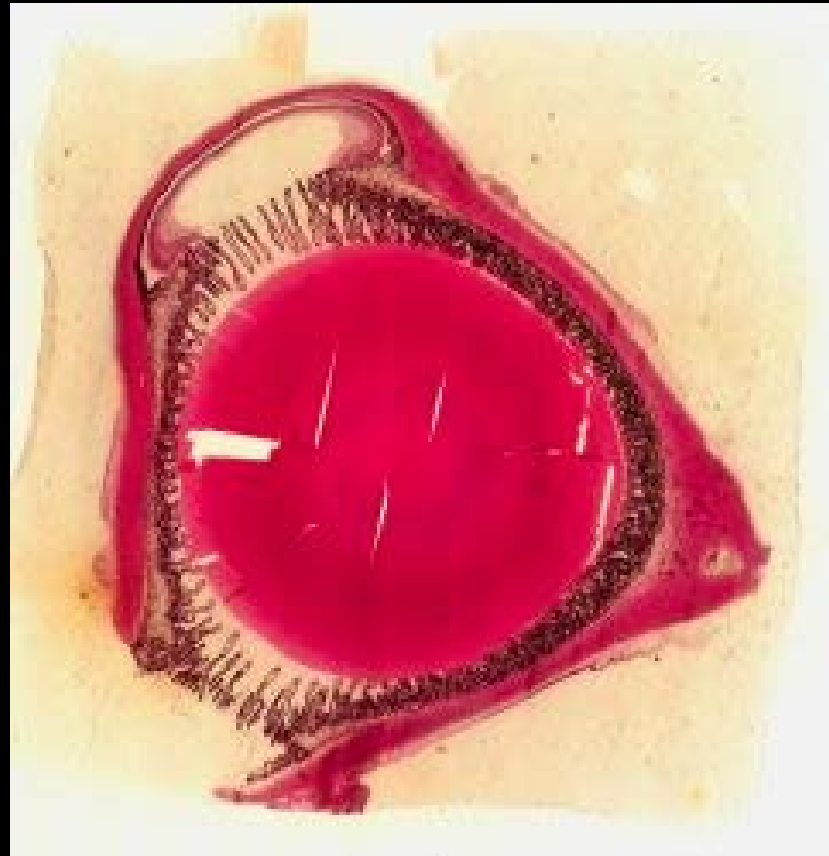
Bandicoot (*Perameles longicauda*) - Slide 380



Black-tailed wallaby
(*Wallabia bicolor*) - Slide 505



Black-tailed wallaby
(*Wallabia bicolor*) - Slide 514



Blotched blue-tongued lizard
(*Tiliqua nigrolutea*) - Slide 65



Brazilian gecko (*Gymnodactylus* sp) - Slide 59



Bribon's toadlet or Brown toadlet
(*Pseudophryne bibronii*) - Slide 107



Burton's legless lizard (*Lialis burtonis*) - Slide 48



Common ringtail possum
(*Pseudocheirus peregrinus*) - Slide 394



Common ringtail possum
(*Pseudocheirus peregrinus*) - Slide 395



Cunningham's skink (*Egernia cunninghami*) - Slide 616



Eastern bearded dragon
(*Pogona barbata*) - Slide 67



Eastern bearded dragon
(*Pogona barbata*) - Slide 68



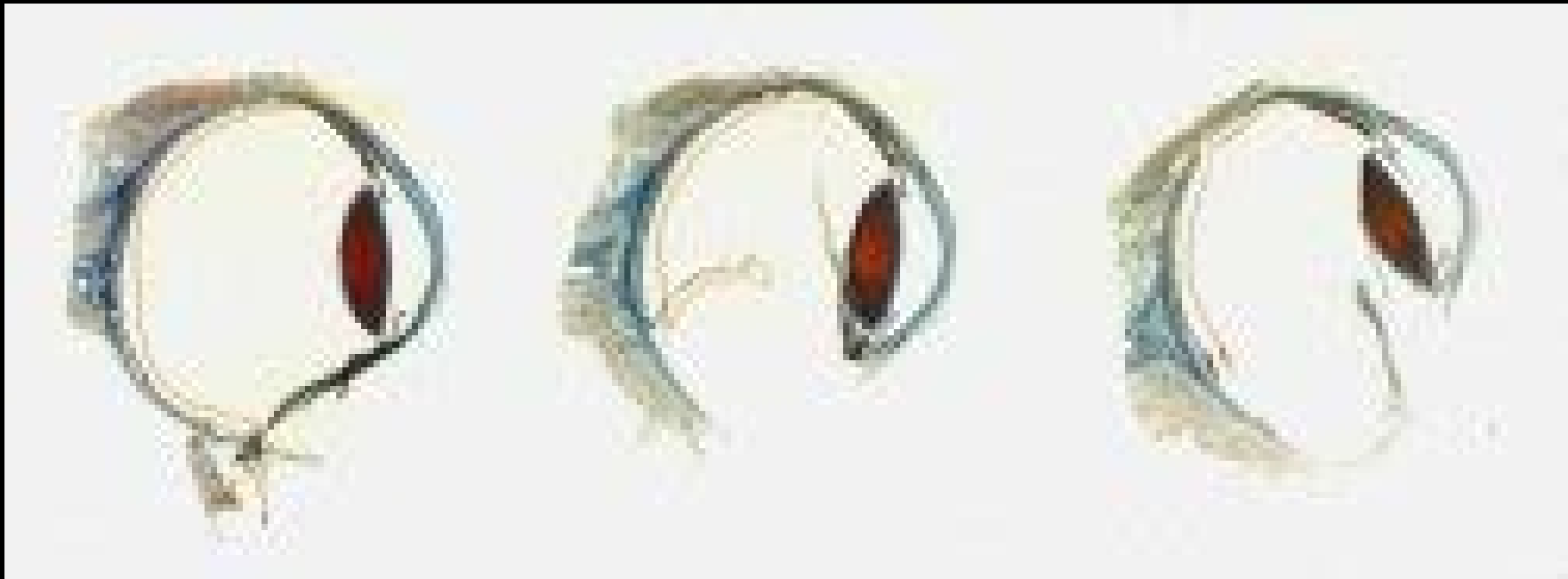
Eastern bearded dragon
(*Pogona barbata*) - Slide 71



Eastern bearded dragon
(*Pogona barbata*) - Slide 136



Echidna (*Tachyglossus aculeatus*)
Edge of retina - Slide 272



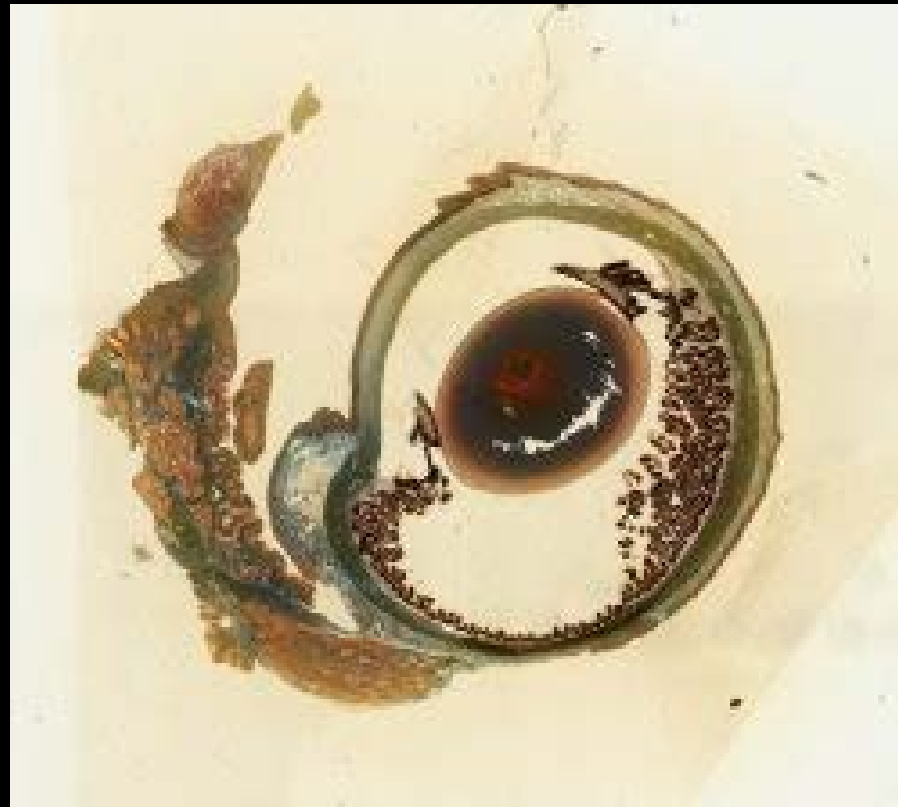
Echidna (*Tachyglossus aculeatus*)
Edge of retina - Slide 273



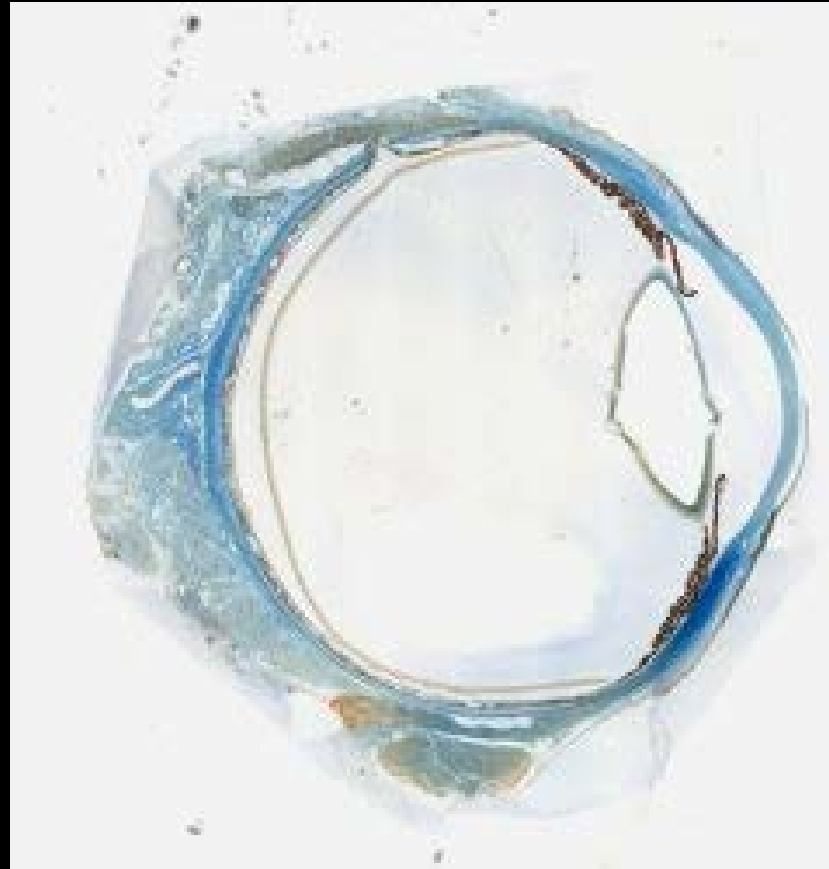
Echidna (*Tachyglossus aculeatus*)
Optic Nerve - Slide 264



Echidna (*Tachyglossus aculeatus*)
Optic Nerve - Slide 297



Echidna (*Tachyglossus aculeatus*) - Slide 225



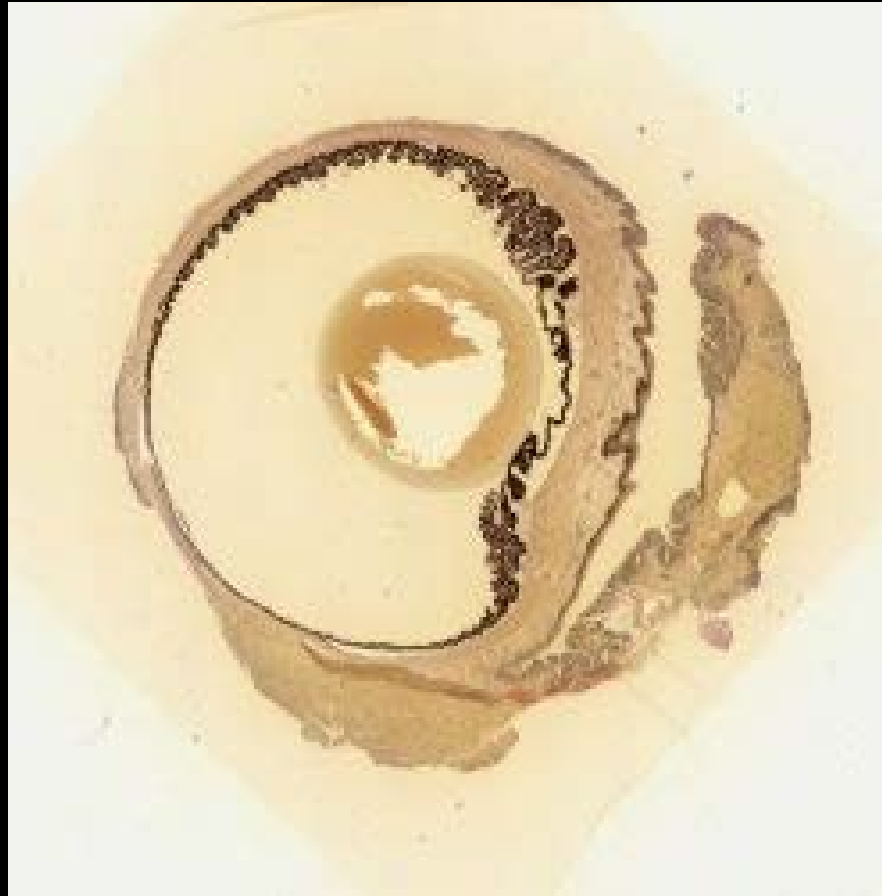
Echidna (*Tachyglossus aculeatus*) - Slide 245



Echidna (*Tachyglossus aculeatus*) - Slide 248



Echidna (*Tachyglossus aculeatus*) - Slide 251



Echidna (*Tachyglossus aculeatus*) - Slide 276



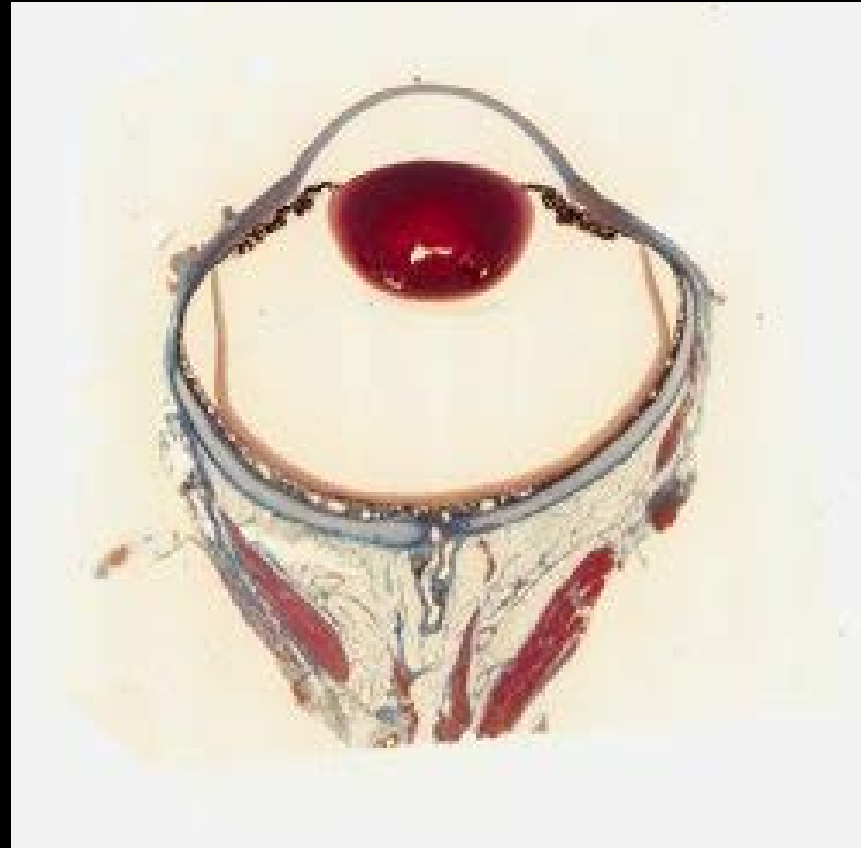
Echidna (*Tachyglossus aculeatus*) - Slide 283



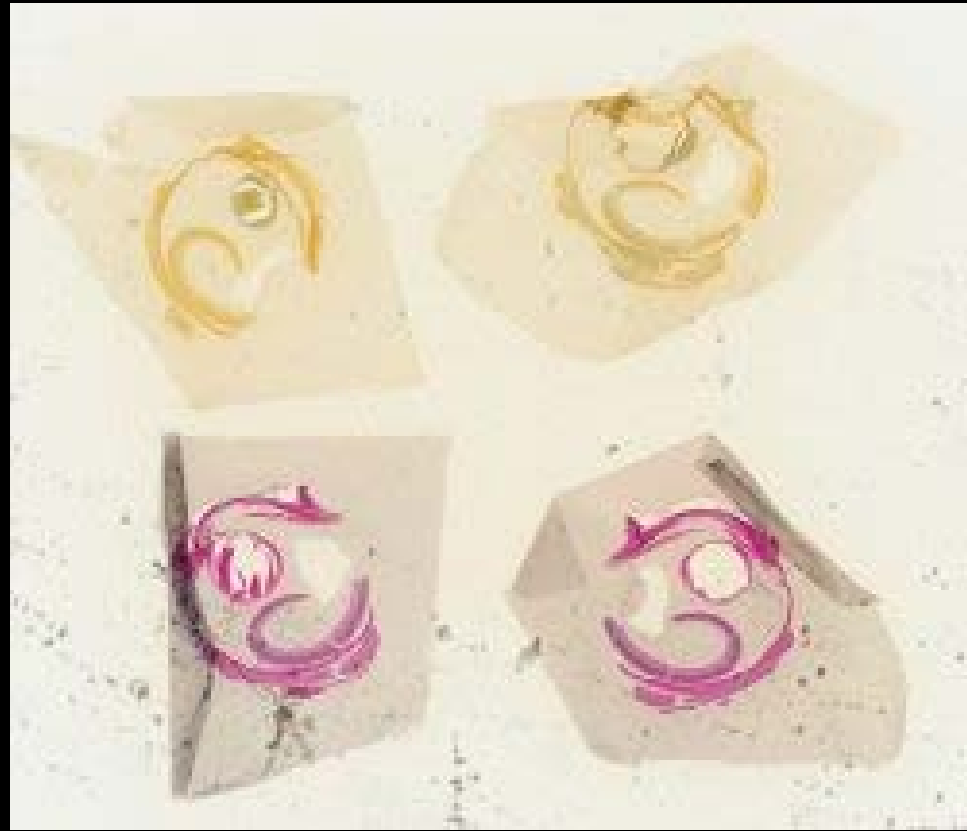
Echidna (*Tachyglossus aculeatus*) - Slide 752



Echidna (*Tachyglossus aculeatus*) - Slide 804



Fraser's delma (*Delma fraseri*) - Slide 34



Fraser's delma (*Delma fraseri*) - Slide 41



Gippland water dragon
(*Physignathus lesueurii*) - Fovea Slide 614



Goanna (Varanus sp) - Slide 140



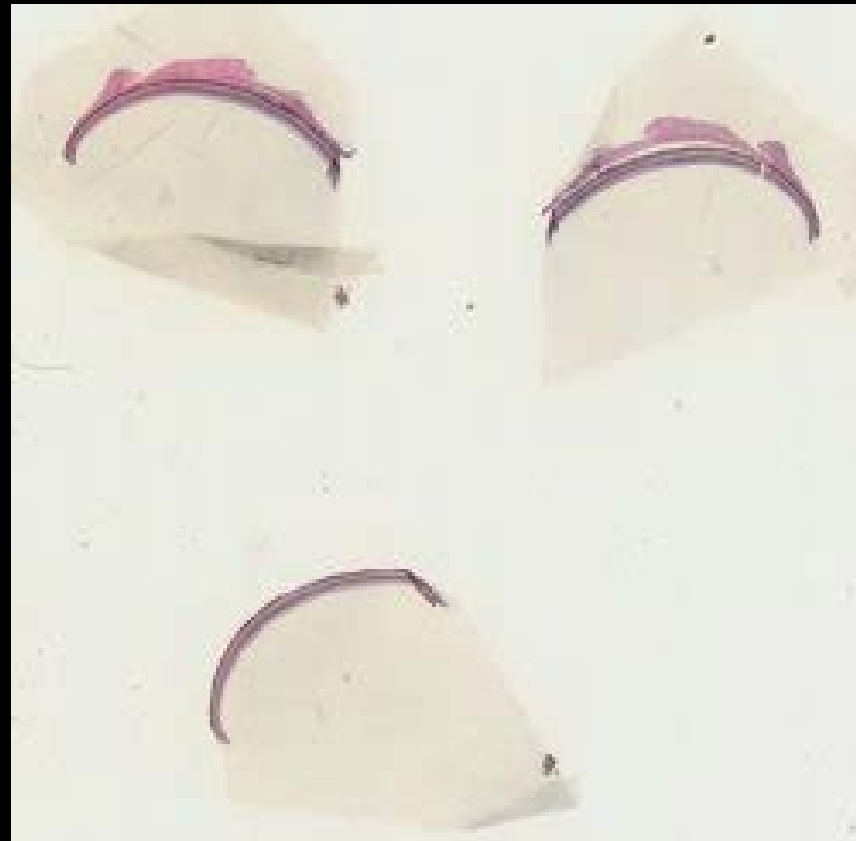
Goanna (Varanus sp) - Slide 146



Goanna (Varanus sp) - Slide 147



Green and golden bell frog (*Litoria aurea*) - Slide 25



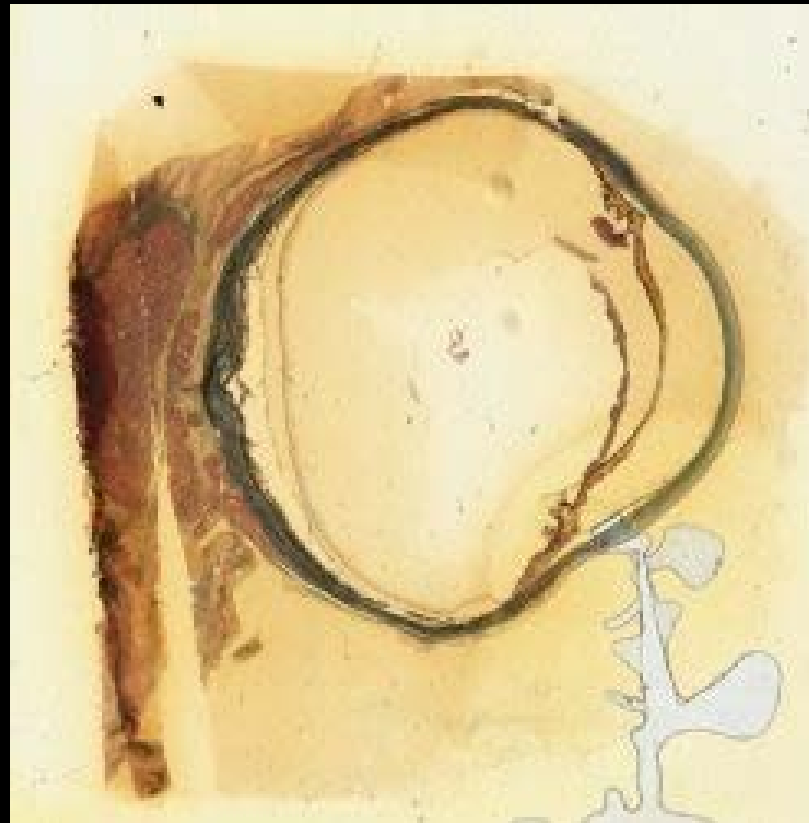
Green and golden bell frog (*Litoria aurea*) - Slide 26



Jacky lizard (*Amphibolurus muricatus*)
fovea Slide 666



Koala (*Phascolarctos cinereus*) - Slide 376



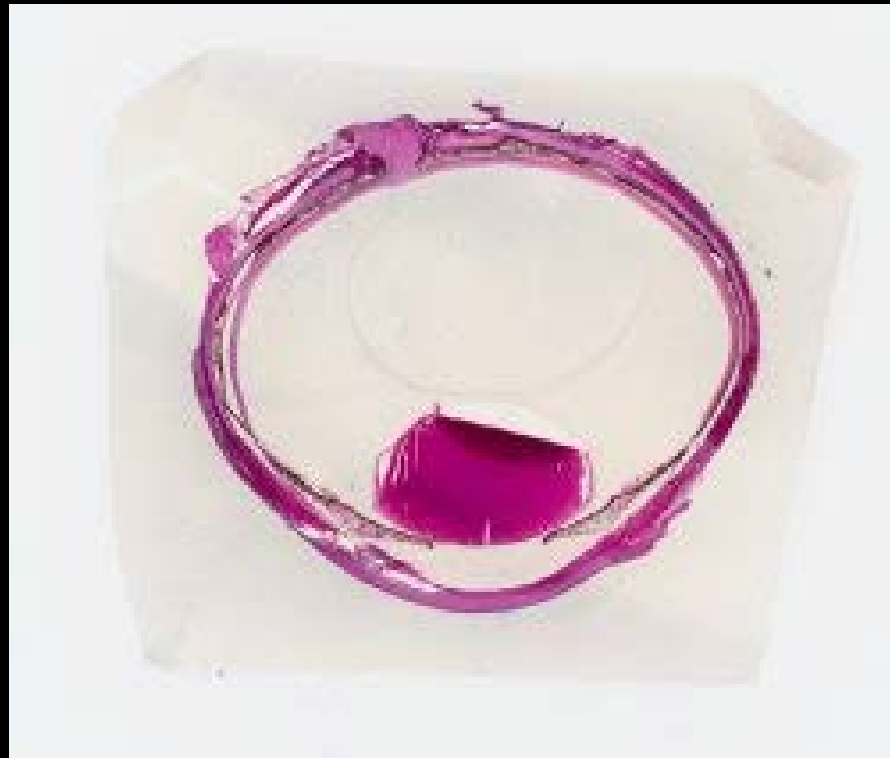
Long eared bat
(*Nyctophilus geoffroyi*) - Slide 794



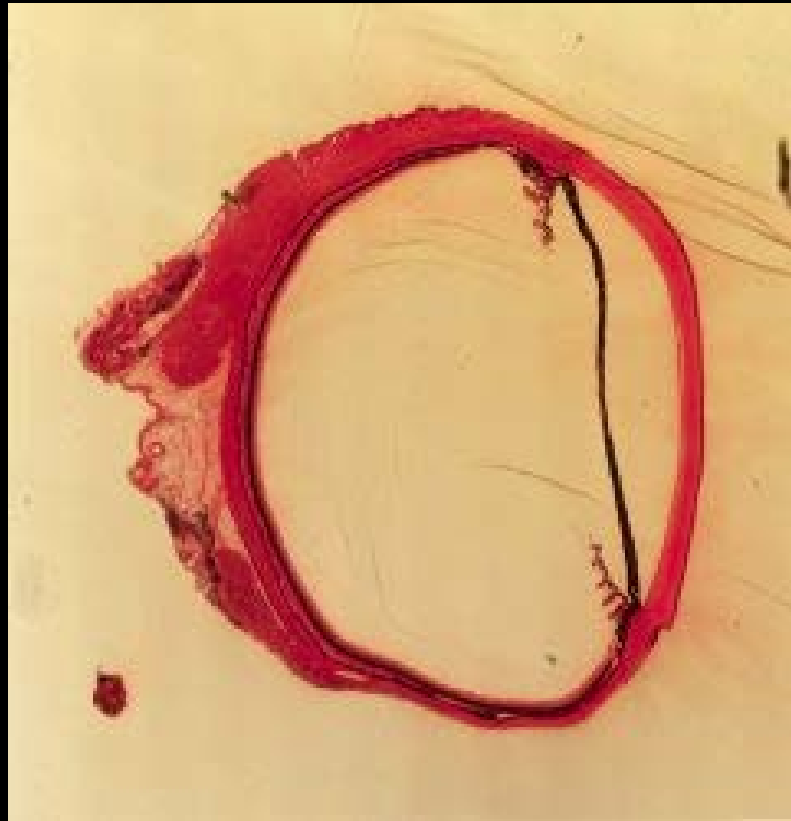
Lowland copperhead
(*Denisonia superba*) - Slide 117



Murray River turtle
(*Emydura macquarii*) - Slide 608



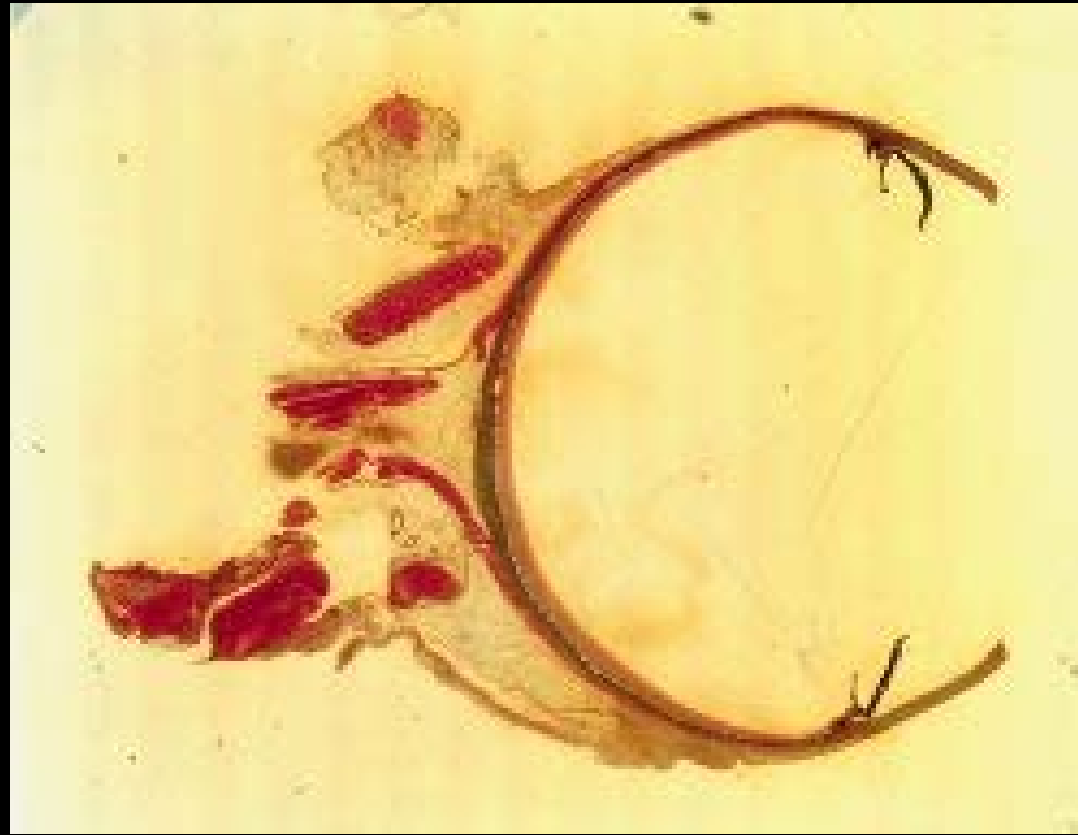
Native cat or Quoll (*Dasyurus* sp) - Slide 316



Native cat or Quoll (*Dasyurus* sp) - Slide 332



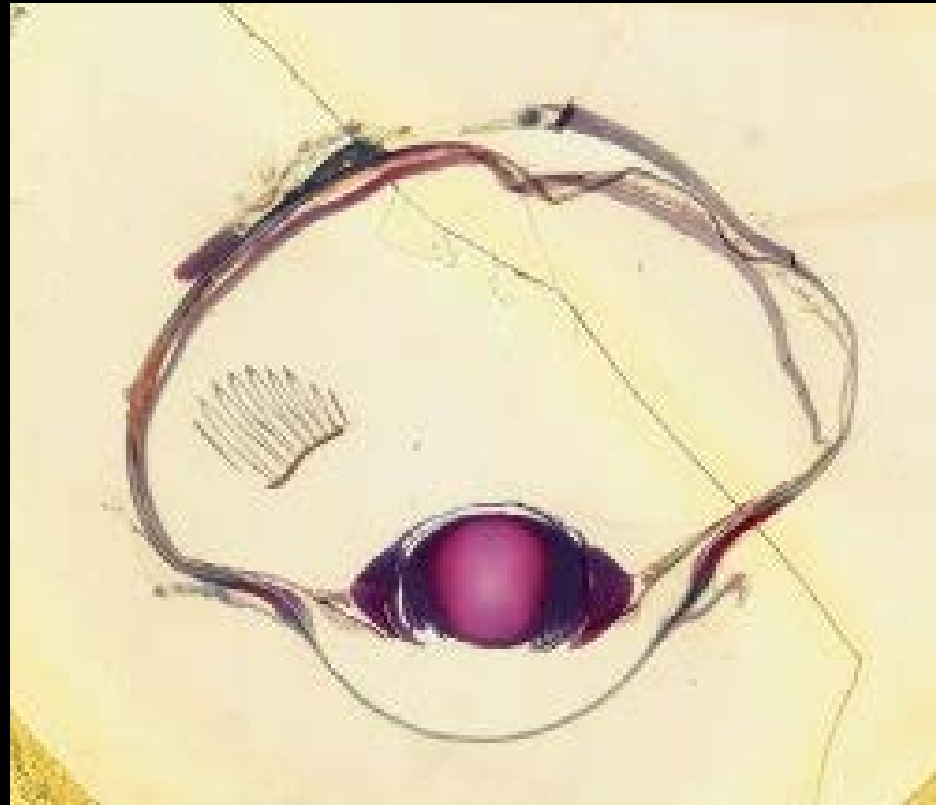
Native cat or Quoll (*Dasyurus* sp) - Slide 348



Peter's blind snake (*Ramphotyphlops bituberculatus*) - Slide 108



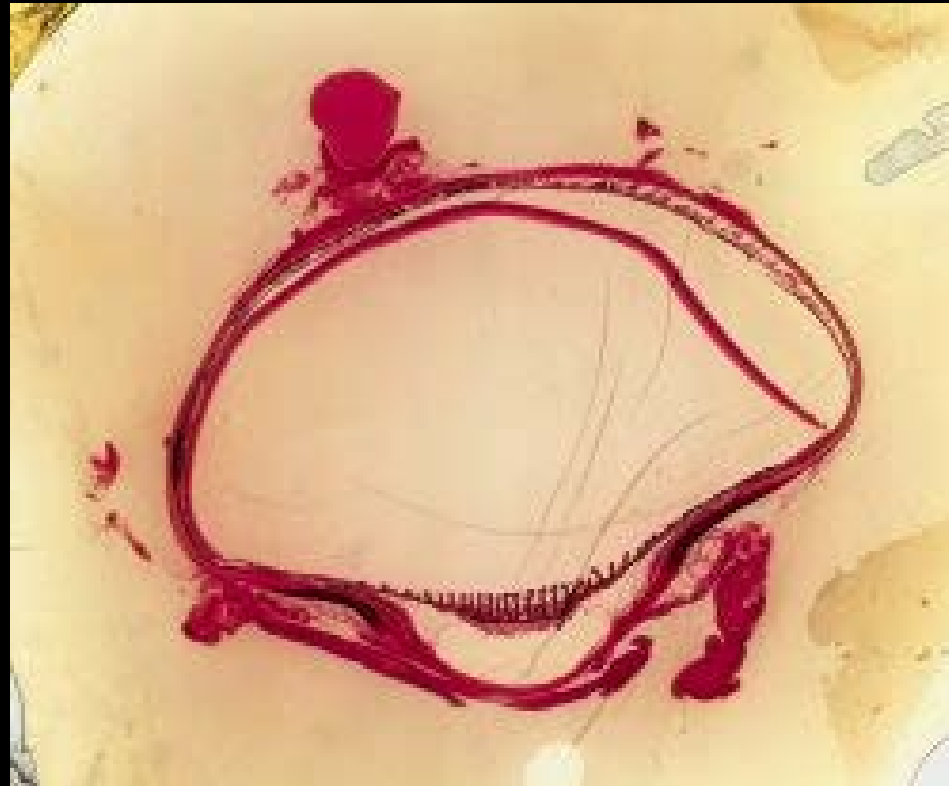
Pigeon (Columbidae sp) - Slide 174



Pigeon (Columbidae sp) - Slide 179



Pigeon (Columbidae sp) - Slide 183



Pigeon or dove (Columbidae sp) - Slide 190



Platypus (Ornithorhynchus anatinus) - Slide 203



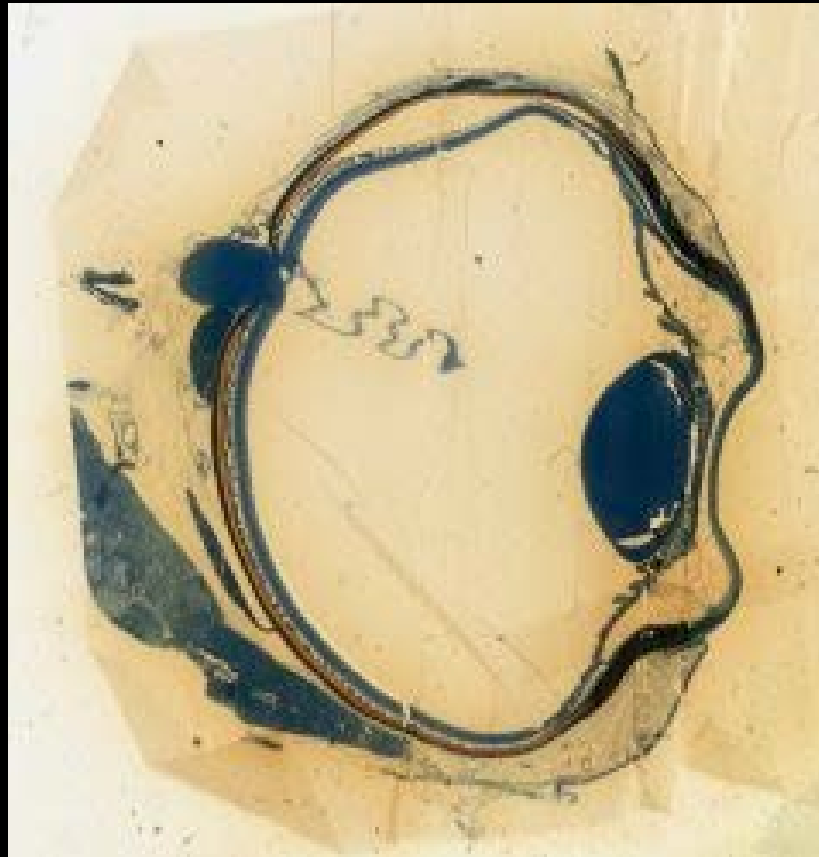
Platypus (Ornithorhynchus anatinus) - Slide 544



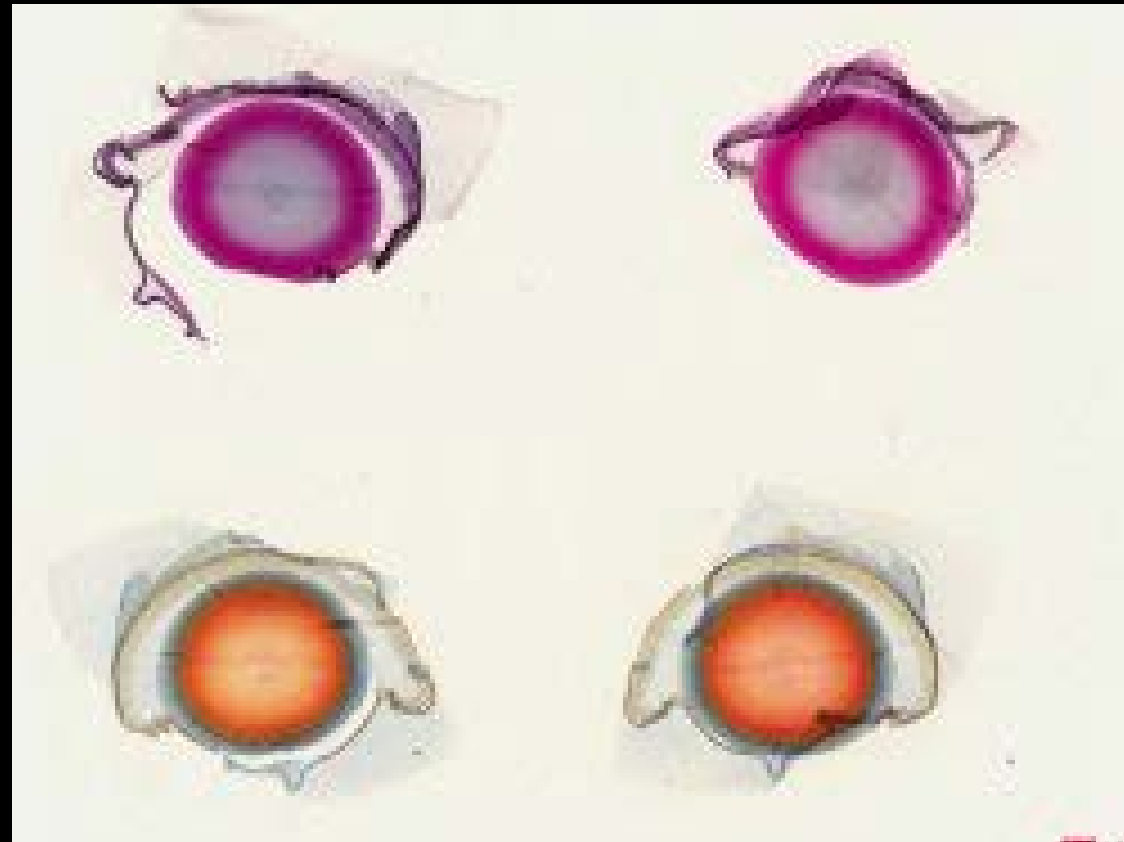
Rhesus macaque (*Macaca mulatta*) - Slide 710



Short-tailed shearwater
(*Ardenna tenuirostris*) - Slide 188



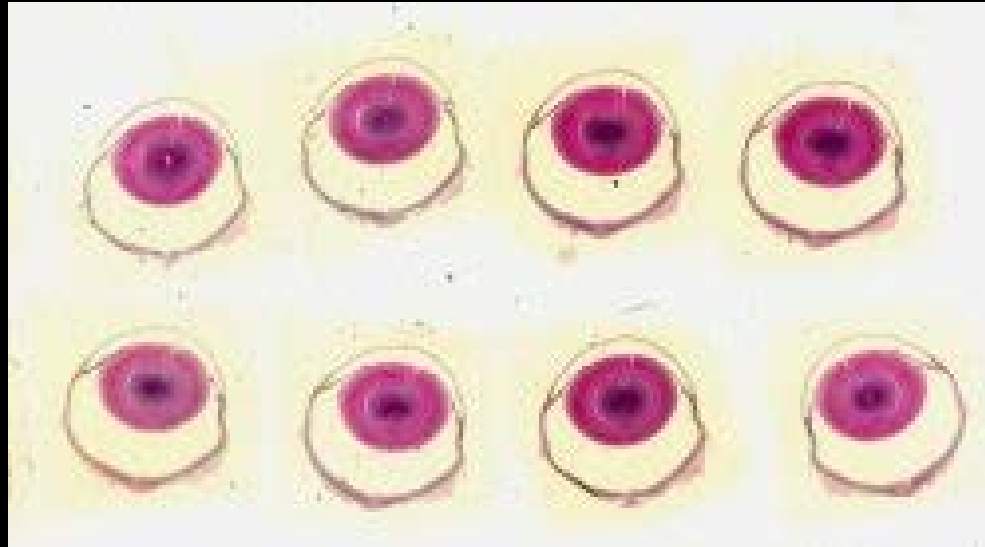
Southern brown tree frog (*Litoria ewingii*) - Slide 29



Southern grass skink
(*Pseudemoia entrecasteauxii*) - Slide 673



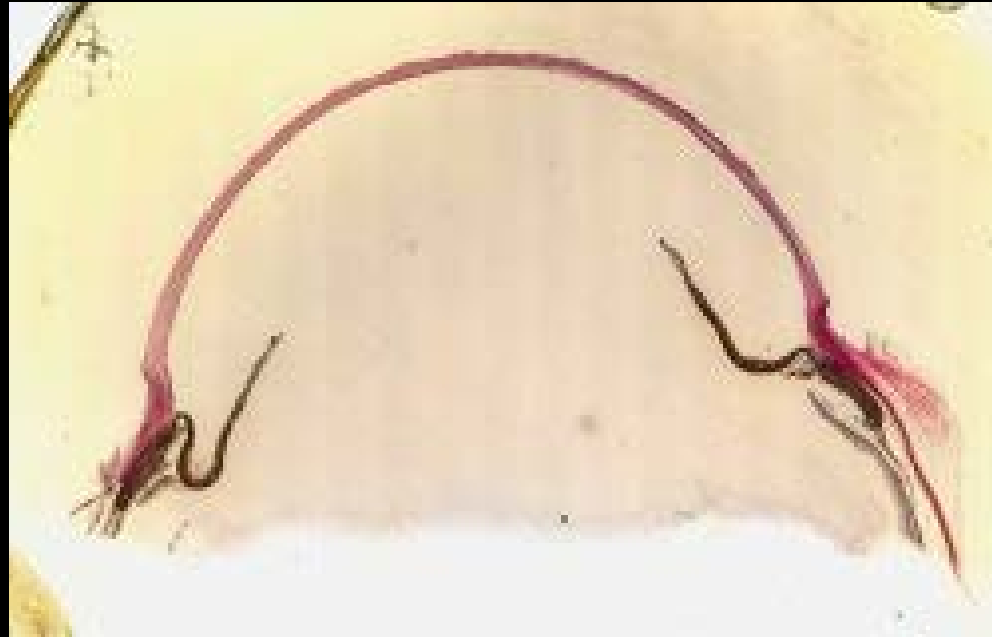
Striped marsh frog
(*Limnodynastes peronii*) - Slide 31



Tarsier (Tarsius sp)



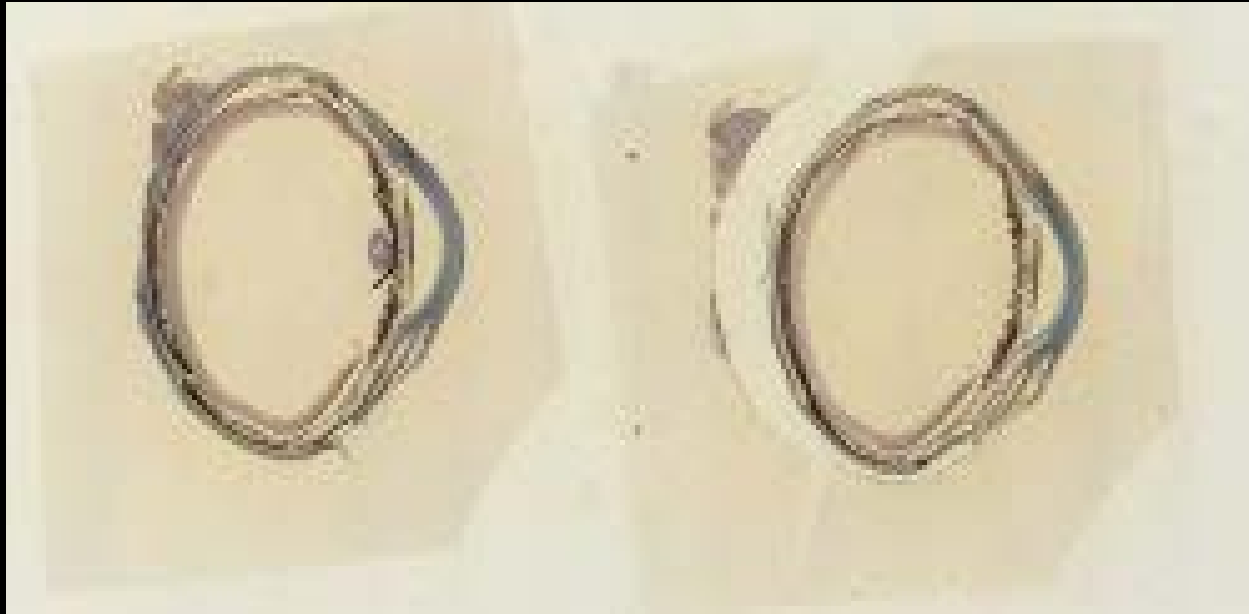
Tarsius (Tarsius sp) - Slide 695



Tiger snake (*Notechis scutatus*) - Slide 124



Tortoise (Testudinidae sp) - Slide 128



Tortoise (Testudinidae sp) - Slide 683



Trout (*Oncorhynchus* sp) - Slide 13



Trout (Oncorhynchus sp) - Slide 597



White's skink (*Egernia whitii*) - Slide 83

